

Stratford Coal CCC Meeting

Presentation –
Company Report &
Overview of Activities

November 2022

Thomas Kirkwood
Senior Environment & Community Advisor

Table of Contents

1. Agenda Item 7a (Progress at the Mine)
2. Agenda Item 7b (Environmental Reporting)
3. Agenda Item 7c (Environmental Management Plans and Monitoring)
4. Agenda Item 7d (Community Complaints)
5. Agenda Item 7e (Community Programs)

1. Progress at the Mine

Mining 3rd Quarter 2022

	Total Waste (BCM)	ROM (T)	Product Coking (T)	Product Thermal (T)
Q3 2022	1,224,407	318,741	66,493	120,917

Note: Total Waste BCM includes mine rehandle

- Mining in Avon North continued during the quarter. Day and evening shift.
- Mining in Stratford East Pit ceased during the quarter.
- Minor BRN backfilling has continued during the quarter.
- Backfilling of Roseville West Pit commenced in April 2022 with most waste taken to this pit.



2. Environmental Reporting & Regulators

Management Area	Project	Status
Reporting	<ul style="list-style-type: none"> Stratford Mining Complex Annual Review 2021 Stratford Mining Complex Annual Biodiversity Report 2021 NPI and NGER reporting 2022 	<ul style="list-style-type: none"> The Stratford Mining Complex 2021 Annual Review has been accepted by the DPIE in May 2022. The Annual Review 2021 has been distributed to the CCC members and is also available on the Stratford Coal website. The Stratford Mining Complex 2021 Annual Biodiversity has been completed. The Annual Biodiversity Report 2021 is included in the 2021 Annual Review and is also available on the Stratford Coal website. The NPI and NGER annual reporting requirements for the Stratford Coal Mine have been prepared and lodged with the relevant government agencies.
Regulator	<ul style="list-style-type: none"> Resources Regulator Rehabilitation Reform Rehabilitation Management Plan Environmental Management Plans 	<ul style="list-style-type: none"> Stratford has prepared and submitted a new Rehabilitation Management Plan and Mine Closure Plan to the Resource Regulator to comply with the Resource Regulators new planning and reporting standards. The Stratford Rehabilitation Management Plan reflects the proposed mining and rehabilitation activities associated with the Stratford Mining Complex. The new RMP is available on the Stratford Coal website. SCPL has prepared revisions of the Stratford Environmental Management Plans to reflect the current status of the SMC. The revised plans have been progressively submitted to DPIE for approval and approved plans have been made publicly available on the Stratford Coal Website.

3. Environmental Management Plans & Monitoring

- a) Air Quality Management
- b) Blast Management
- c) Noise Management
- d) Water Management
- e) Rehabilitation Management
- f) Biodiversity Management
- g) Mine Closure Planning

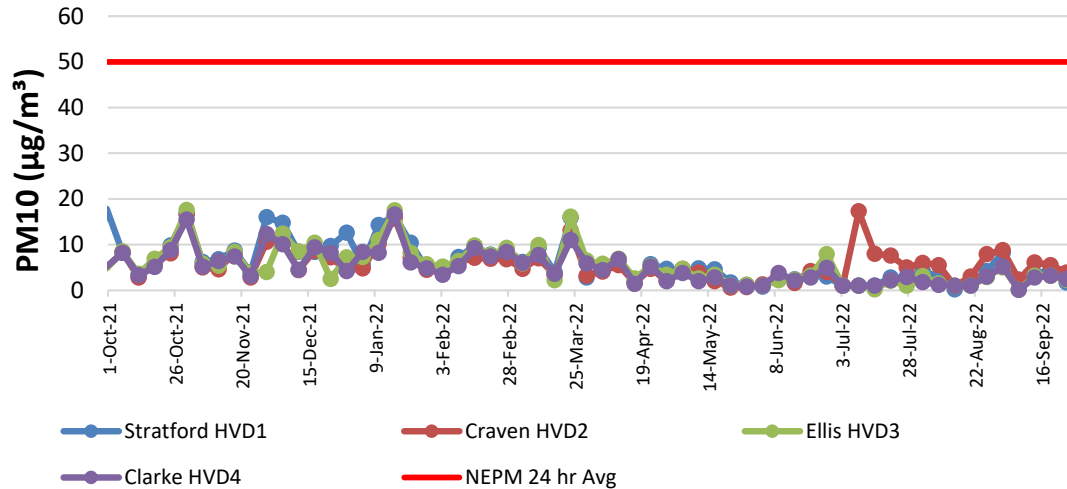
3a. Air Quality Management

Management Area	Project	Status
Air quality monitoring	<ul style="list-style-type: none">Real-time air quality monitoring	<ul style="list-style-type: none">The real-time air quality TEOM monitors in Stratford and Craven villages continue to operate.General ambient PM10 dust levels have been very low throughout Winter/Spring due to increased rainfall.The real-time air quality management system analyses monitoring data from the TEOM units and records times when the air quality criteria is likely to be exceeded. The system will then provide alarms to staff to implement additional dust mitigation measures where required.No triggers have been received relating to mining operations.

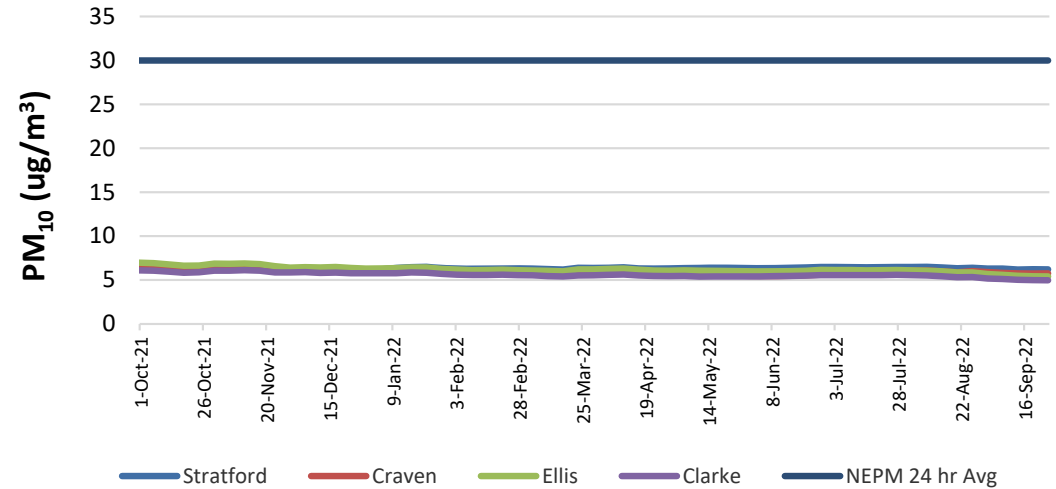


3a. Air Quality Management

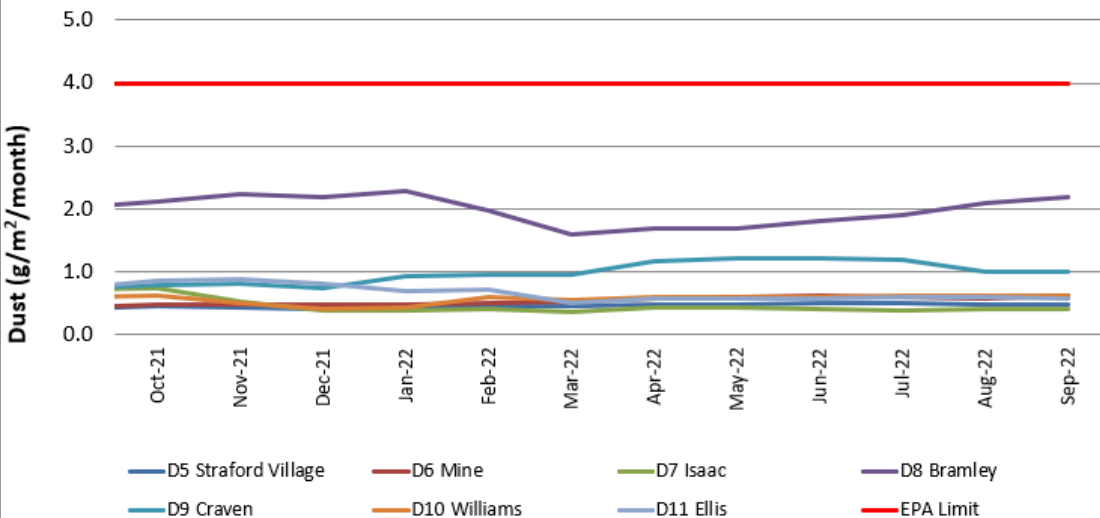
**Stratford HVAS Monitoring - Particulate Matter (PM10)
12 Months to September 2022**



**Stratford HVAS Monitoring (PM₁₀)
Annual Rolling Average - 12 Months to September 2022**



**Stratford Dust Deposition - Annual Rolling Average
12 Months to September 2022**



- Generally good overall air quality.
- All sites below DPIE limit. Air quality results lower during months with higher rainfall.
- Consistent air quality results with minor elevation seen in HVAS results on hot and windy days.
- HVAS results provide more reliable data compared to dust deposition results and should be referred to when interpreting dust emissions.

3b. Blast Management

Management Area	Project	Status
Blasting	<ul style="list-style-type: none"> Blast Monitoring Blast Results 	<ul style="list-style-type: none"> Blasting activities continued in Avon North For the current annual reporting period no blasts have exceeded 115dB(L) (<i>No more than 5% of total blasts allowed to exceed the 115dbL</i>). No blasts exceeded the 5mm/s during the quarter. For the annual reporting period no blasts have exceed 5mm/s.
	<ul style="list-style-type: none"> Blasting Preparations 	<ul style="list-style-type: none"> Blast notifications have continued. Additional recipients have been added to the notification list on request.
Building Inspections	<ul style="list-style-type: none"> Baseline condition inspections 	<ul style="list-style-type: none"> None requested.

3b. Blast Management

Shot #	Location	Date	Time	Isaac (B1) 7432		Ex-Judge (B2) 7441		Atkins (B6) 7434		Greenwood 7422		Clarke (B5) (Mine- owned) 7433 (previously 7377)		Bagnall (Extrapolated result)		Overpress ure Site Exceedanc e ¹	Ground Vibration Site Exceedanc e ¹	Monitored Blasts ¹
				24hr	mm/s	dBL	mm/s	dBL	mm/s	dBL	mm/s	dBL	mm/s	dBL	mm/s			
AN271	Avon North	Wednesday, 10 August 2022	12:35:36	0.31	83.6	<0.24	<114	<0.24	<114	<0.24	<114	2.29	111.3	1.46	106.6	0.00%	0.0%	5
AN268	Avon North	Friday, 12 August 2022	12:42:10	<0.24	<114	0.26	80.7	<0.24	<114	<0.24	<114	1.19	108.5	0.75	103.7	0.00%	0.0%	6
AN272	Avon North	Friday, 19 August 2022	12:49:03	0.35	96.6	0.46	86.7	0.28	103.4	<0.24	<114	1.98	113.3	1.29	108.8	0.00%	0.0%	7
AN276	Avon North	Friday, 26 August 2022	12:39:48	0.24	89.6	<0.24	<114	<0.24	<114	<0.24	<114	1.26	115.4	0.81	110.8	0.00%	0.0%	8
AN278	Avon North	Wednesday, 7 September 2022	12:52:00	0.42	93.1	0.37	80.7	0.34	107.3	<0.24	<114	2.35	118.5	1.60	114.5	0.00%	0.0%	9
AN280	Avon North	Friday, 9 September 2022	12:42:00	<0.24	<114	<0.24	<114	<0.24	<114	<0.24	<114	<0.24	<114	<0.24	<114	0.00%	0.0%	10
AN281	Avon North	Wednesday, 21 September 2022	12:40:00	0.25	87.1	<0.24	<114	<0.24	<114	<0.24	<114	1.62	107.3	1.02	102.4	0.00%	0.0%	11
AN282	Avon North	Wednesday, 28 September 2022	10:10:00	0.28	83.6	0.31	80.7	0.25	101.8	<0.24	<114	0.86	109.9	0.61	106.2	0.00%	0.0%	12
AN285	Avon North	Friday, 30 September 2022	9:34:00	0.39	103.1	<0.24	<114	0.29	103.7	<0.24	<114	1.11	109.2	0.76	105.2	0.00%	0.0%	13
AN283	Avon North	Thursday, 6 October 2022	12:48:00	0.25	89.6	0.30	80.7	<0.24	<114	<0.24	<114	0.59	114.1	0.40	110.0	0.00%	0.0%	14
AN286	Avon North	Friday, 14 October 2022	12:32:00	0.28	87.1	<0.24	<114	<0.24	<114	<0.24	<114	0.99	110.6	0.65	106.2	0.00%	0.0%	15

- Note: Blast Compliance: No more than 5% of total blasts for annual monitoring period to exceed an overpressure of 115 dBL or ground vibration of 5 mm/s. No blast is to exceed an overpressure of 120 dBL or ground vibration of 10 mm/s.
- Note: Where no trigger is recorded the results indicate <0.22mm/s and <110.0dBL corresponding to the blast monitor settings.
- Note: Blast results for Clarke are extrapolated to the next nearest non-mined owned residence.



3c. Noise Management

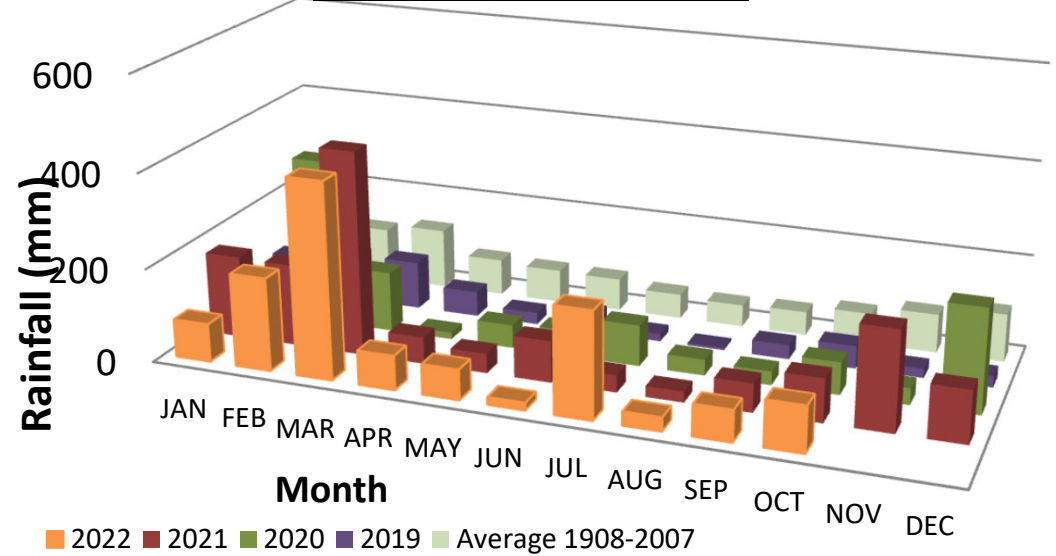
Management Area	Project	Status
Monitoring	<ul style="list-style-type: none"> Monthly Noise Survey Sound power monitoring 	<ul style="list-style-type: none"> Monthly attended noise monitoring rounds was undertaken during Q3 2022. No non-compliant results were recorded during the surveys. Reports have been made available on the Stratford Coal website. The next monitoring is scheduled in November 2022. Sound power monitoring of the mobile plant fleet was undertaken in September 2022.
Real-Time Noise	<ul style="list-style-type: none"> Real-Time Noise System Noise forecast reports. 	<ul style="list-style-type: none"> Real-time noise monitors continue to operate near Stratford Village and Craven Village. The integrated real-time noise management system is operational. The system analyses monitoring data from the noise units, the weather station and the inversion towers and records times when either the noise criteria is likely to be exceeded or when noise enhancing weather conditions are present. The system will then provide alarms to staff to implement additional noise mitigation measures where required. Daily predicted noise and dust forecast reports are generated and are issued to the mining supervisors prior to each shift.

3d. Water Management

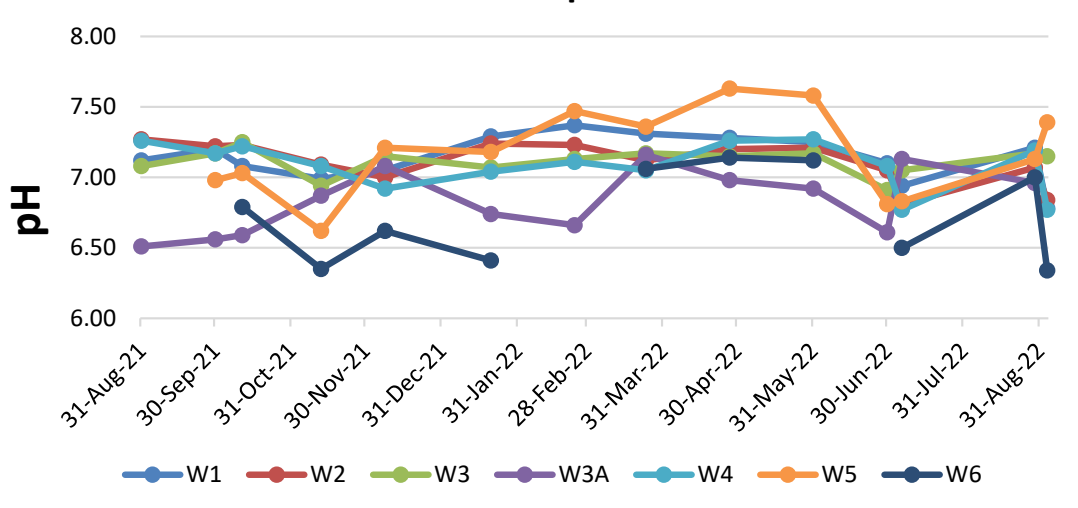
Management Area	Project	Status
Site Water Management	<ul style="list-style-type: none"> Annual water balance review 	<ul style="list-style-type: none"> The 2021 annual site water balance has been prepared. A summary is included in the 2021 Annual Review and has been made available on the Stratford Coal website.
Water Management Structures	<ul style="list-style-type: none"> Avon N and Stratford East Clean Water Diversions 	<ul style="list-style-type: none"> Ongoing inspections, monitoring and maintenance has been completed in Q3 2022.
Surface Water Monitoring	<ul style="list-style-type: none"> Routine monitoring 	<ul style="list-style-type: none"> Routine water sampling continued. All results consistent with the SCM Environmental Assessment predictions. Above average rainfall was received during Q3 2022. Elevated electrical conductivity results were observed at surface water monitoring Point W5. Elevated levels deemed to be due to semi stagnation of the pools of water adjacent to the monitoring point.
	<ul style="list-style-type: none"> Macro-invertebrates 	<ul style="list-style-type: none"> Macro-invertebrate monitoring was completed in September 2022 and continues to show no identified impacts from the Stratford Mining Operations on aquatic ecosystems.
Groundwater Monitoring	<ul style="list-style-type: none"> Routine monitoring 	<ul style="list-style-type: none"> Routine groundwater sampling continued. All results consistent with the SCM Environmental Assessment predictions.

3d. Water Management

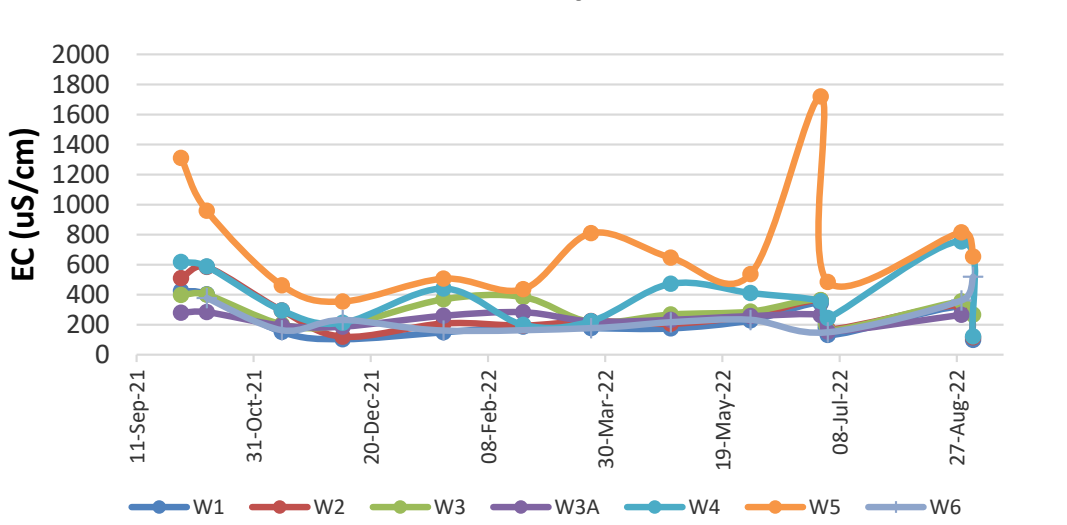
Stratford Monthly Rainfall



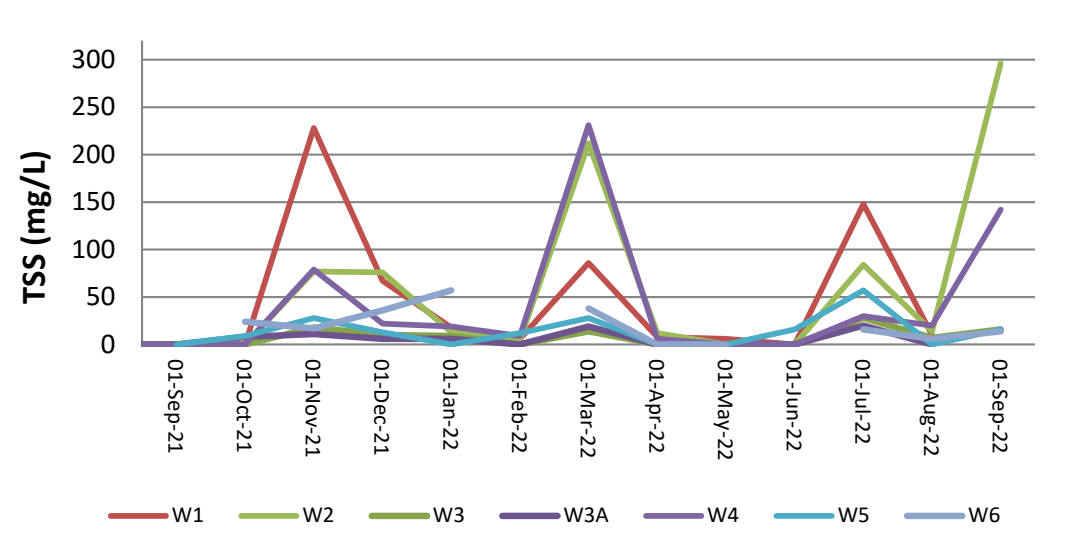
**pH - Avon River & Avondale Creek
12 Months to September 2022**



**EC - Avon River & Avondale Creek
12 Months to September 2022**



**Surface Water Monitoring -TSS
Avon River/Avondale Creek**



3e. Rehabilitation Management

Management Area	Project	Status
Rehabilitated Waste Emplacements	<ul style="list-style-type: none"> BRN backfilling and bulk-shaping Rehabilitation Maintenance 	<ul style="list-style-type: none"> Mining in the BRN pit was finalised in June 2021 and minor backfilling has continued to progress in Q3 2022. Slashing of pasture rehab was completed in Q3 2022. Manual weed removal rescheduled to Q4 2022.
	<ul style="list-style-type: none"> Native rehabilitation infill planting. 	<ul style="list-style-type: none"> Due to above average persistent rainfall, infill planting with tubestock in existing rehabilitation areas has been postponed until November 2022. Planting areas will include BRN Rehabilitation area, Roseville West Rehabilitation area and Stratford Main Pit Rehabilitation area.
Monitoring	<ul style="list-style-type: none"> Vegetation Monitoring - Ecosystem Function Analysis 	<ul style="list-style-type: none"> Rehabilitation monitoring incorporating landscape function analysis and vegetation dynamics was completed in April 2022. The results will be included in the next Annual Review.



Photos: Rehabilitation Maintenance, 5 October 2022.



3e. Biodiversity Management

Management Area	Project	Status
Biodiversity Offset Area	<ul style="list-style-type: none"> Revegetation Planning Revegetation works 	<ul style="list-style-type: none"> Due to above average persistent rainfall, Q2 planting program has been postponed to commence in November 2022. Wet ground conditions have prevented adequate ground preparations. Planting areas will include offset properties near Woods Rd and Stratford Village. Additional plantings will be undertaken along Wenham Cox Rd, BRN Rehabilitation area, Roseville West Rehabilitation area and Stratford Main Pit Rehabilitation area. Ground preparations methodology trials have been completed in Q2. Tubestock currently being held by the nurseries over winter have maintained good health. Approximately 21,291 trees over 88.77 hectares will be planted in campaigns reliant on suitable ground conditions



3f. Biodiversity Management

Management Area	Project	Status
Nest Box Program	<ul style="list-style-type: none"> Nest box Monitoring 	<ul style="list-style-type: none"> Nest box monitoring was last undertaken in June 2022. Monitoring has found 91% of nest boxes were either occupied or showing signs of occupancy after approximately 1 year of installation. The Annual monitoring of all nest boxes is schedule to be undertaken in November 2022. A summary of the nest box progress will be included in the 2022 Annual Review.
Fauna	<ul style="list-style-type: none"> Triennial fauna survey 	<ul style="list-style-type: none"> Triennial fauna survey is scheduled to commence in November 2022. The results of the fauna monitoring program are used to determine the abundance of foraging and breeding habitat for a range of native vertebrate fauna, including birds, mammals, reptiles and frogs.



Map: Proposed survey locations for the triennial monitoring



Photo: Squirrel Glider in nest box, March 2022.



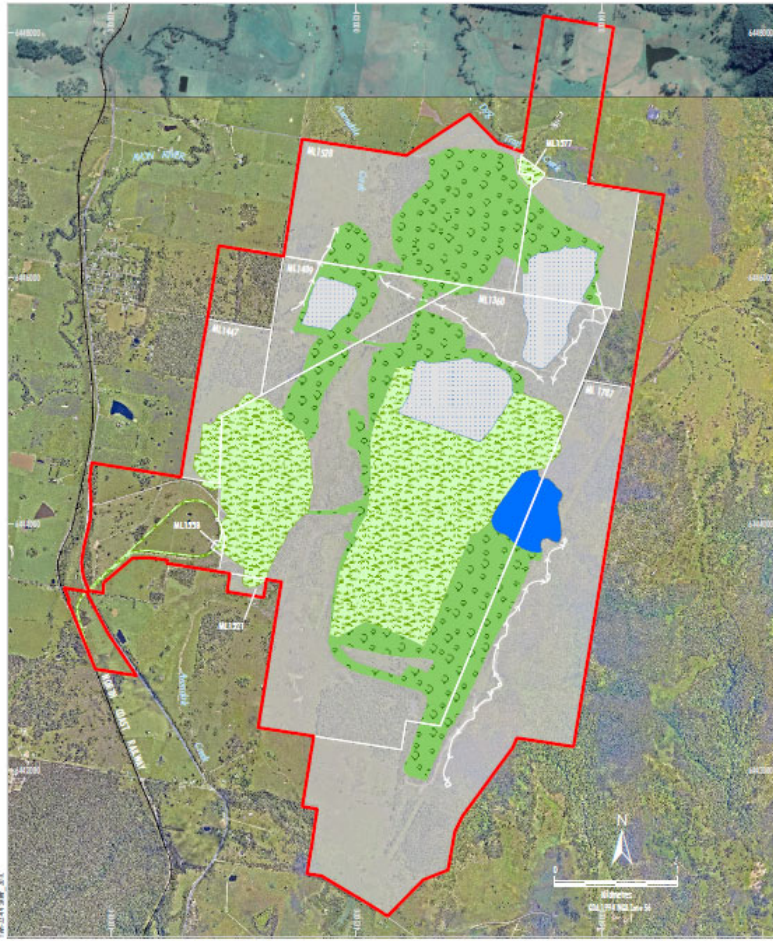
3g Mine Closure

Mine Closure Progress

- Condition 5, Schedule 2 of the SMC's Development Consent (SSD_4966) authorises mining operations to be carried at the SMC until 31 December 2025.
- Mining operations at Stratford are currently planned to be completed in approximately mid-2024 at which time the site will transition to closure.
- SSD_4966 and the Mining Leases continue to be in force until SCPL rehabilitates the site in accordance with the conditions of the Approval and MLs to the satisfaction of DPIE and the Resources Regulator.
- New RMP/Closure Plans have been submitted to Resources Regulator.
- As the SMC progresses towards the end of its approved mine life, operations and activities at the SMC over the next four years will progressively change to reflect this.



3g Mine Closure



Source: Orthophoto - Yencord (2021); LPI (2016); NSW Department of Planning & Environment (2017)

LEGEND	
	Project Approval Boundary
	Coal - Current Titles
	Agricultural - Grazing
	Final Void
	Native Ecosystem
	Water Storage (Excluding Final Void)

STRATFORDCOAL
Part of the Yancoal Australia Group

STRATFORD EXTENSION PROJECT
Final Landform Features



Source: Orthophoto - Yencord (2021); LPI (2016); NSW Department of Planning & Environment (2017)

LEGEND	
	Project Approval Boundary
	Coal - Current Titles
	Final Landform Contours (5 m Interval)

STRATFORDCOAL
Part of the Yancoal Australia Group

STRATFORD EXTENSION PROJECT
Final Landform Contours

3g Mine Closure Planning

Note: *Refer to Stratford Mining Operations Plan & Rehabilitation Management Plan Table 13 Mine Closure Planning Schedule.

*Further detail on mine closure planning progress is included in the Annual Review 2022.

Management Area	Project	Status
Mine Closure Planning General	<ul style="list-style-type: none"> Mine Closure Planning Program 	<ul style="list-style-type: none"> SCPL has updated the Mine Closure Planning Program in the Stratford Mining Complex Rehabilitation Management Plan (RMP). IEMA was engaged in June 2021 to assist preparing an updated Mine Closure Planning Program and continue to assist with closure planning. The Mine Closure Planning Program is intended to provide a strategy and a description of all the works required to develop the Detailed Mine Closure Plan.
Rehabilitation Management Plan	<ul style="list-style-type: none"> Rehabilitation Management plan, including closure plan 	<ul style="list-style-type: none"> The RMP, including the updated closure planning program was submitted to the Resources Regulator in July 2022. The RMP has been provided for consultation with the CCC.
Closure Risk Assessment	<ul style="list-style-type: none"> Mine Closure Risk Assessment review 	<ul style="list-style-type: none"> A review of the Stratford Coal Mine Rehabilitation and Mine Closure Risk Assessment was undertaken in August 2021. The outcomes of the risk assessment have been used to develop an updated actions register which forms the basis of the Mine Closure Planning Program. This will be updated again in early-mid 2023 to ensure risks have been considered in the planning process. A post closure public safety risk assessment will be undertaken over coming months.
Environmental Management Plans	<ul style="list-style-type: none"> EMP reviews for closure stage 	<ul style="list-style-type: none"> EMPs will be progressively reviewed and updated to reflect the current stage of operations and ongoing rehabilitation and mine closure requirements. EMPs will identify post-closure environmental monitoring and maintenance requirements. Post-closure monitoring and maintenance activities will continue until the specific completion criteria has been met and confirmation has been received from the relevant authority.
Final land use	<ul style="list-style-type: none"> Potential final land-use planning 	<ul style="list-style-type: none"> The target post-mining land uses are defined in the RMP and shown in Figure 4 of the RMP.

3g Mine Closure Planning

Management Area	Project	Status
Stakeholder and Community	<ul style="list-style-type: none"> Stakeholder engagement 	<ul style="list-style-type: none"> Communications with the CCC regarding mine closure planning is ongoing. This presentation will continue to be updated to provide relevant information through the CCC forum. The Mine Closure Planning Program includes requirements for the development of the following strategies: Stakeholder Consultation Strategy, Human Resources Strategy and a Closure Socio-Economic Impact Assessment. Stakeholder and HR strategies have been finalised. The socio-economic impact assessment is currently being undertaken.
Rehabilitated Landforms	<ul style="list-style-type: none"> Landform design and stability 	<ul style="list-style-type: none"> SCPL have continued to prepare final landform designs for the site. These are now presented in the RMP. The project is now considering detailed design of landforms and surface water drainage features. This work will be finalised in 2023.
Water Management	<ul style="list-style-type: none"> Site water Balance 	<ul style="list-style-type: none"> SCPL will review the site water balance and final landform drainage design to ensure comparable drainage density to local natural landforms.
Final Voids	<ul style="list-style-type: none"> Water management and final void water balance 	<ul style="list-style-type: none"> Void closure criteria have been prepared and are detailed in the RMP. Review of the final voids site water balance models is currently being finalised to ensure the balance incorporates the updated final landform design, surface water inflows and outflows and recently updated groundwater modelling. This work is ongoing and will form an important part of the closure program.
	<ul style="list-style-type: none"> Groundwater Model 	<ul style="list-style-type: none"> Post-mining groundwater model verification has been finalised and the data is being used in the final voids water balance. Additional work may be required to inform the closure project at a later time.
Rehabilitation Resources	<ul style="list-style-type: none"> Topsoil Resources 	<ul style="list-style-type: none"> A topsoil stockpile update was undertaken in July 2021 and confirmed adequate topsoil is available for rehabilitation. The rehabilitation resources register will be updated throughout mining operations and closure.
Biodiversity Offset	<ul style="list-style-type: none"> Biodiversity Offset Integration 	<ul style="list-style-type: none"> Integration of the biodiversity offset strategy is a key component of the rehabilitated final land form and land use. SCPL will undertake an assessment of the SMC Biodiversity Offset Areas and Biodiversity Enhancement Areas to confirm completion of the Biodiversity Offset Strategy completion criteria and integration with the SMC rehabilitation.

4. Community Complaints - Summary

Stratford Complaint Summary

Period: 1/08/2022 – 31/10/2022

Period: 3 Months

Total No. of Complaints: 1

Total No. of Complainants: 1

Date/Time of Complaint	Complainant Location	Method of Complaint	Nature of Complaint	Investigation/Outcome
6/9/2022 8:22am	Approx. 2.5km west of source (2.5kms from blast)	Direct to mobile	Dozer Track Slap and Lighting	<ul style="list-style-type: none"> Complainant called Senior Environment & Community Advisor (SECA) mobile phone directly at 8:22AM 6/9/2022. The Complainant stated the dozer track slap noise coming from the CHPP area was a lot louder than usual and was very intrusive. The complainant also stated that the truck noise from Roseville West Pit was audible this morning. SECA committed to investigating the source of the noise. The Complainant added that they believed that past efforts by Stratford Coal to reduce lighting emissions from fixed lighting plant had not been adequate. Recent inspections from the complainant had found that there was still light emanating offsite. SECA explained that lighting inspections had been completed in response to previous lighting concerns and all fixed lighting was required for safe operations, the same inspections found that lighting was facing downward where possible and all lighting not required to be on permanently was on motion sensors or timing switches. SECA suggested a lighting tour could be included as part of an upcoming CCC site tour to further discuss. The complainant agreed. SECA investigated the source of the noise and identified the stockpile dozer as the source. SECA instructed the dozer operator to reduce gears while in reverse. SECA called the complainant (8:48AM). The Complainant confirmed that the reduction of speed on the stockpile dozer had eliminated the dozer track slap noise.



5. Community Programs

Management Area	Project	Status
Support Programs	Stratford Coal Community Support Program	<ul style="list-style-type: none"> • Applications are open for the 2023 Stratford Coal Community Support Program. Applications close on 4th of November 2022. • Applications forms are available on the Stratford Coal website.
	Stratford Coal Education Support Fund	<ul style="list-style-type: none"> • The Stratford Coal Education Support Fund will be running again during 2022 and applications are available from Gloucester High School or the MidCoast Council Gloucester office. • Applications will open in December 2022 and close on 31 January 2023.



NEED FUNDING TO HELP IMPROVE OUR LOCAL COMMUNITY?

Yancoal Community Support Program call for applications

Stratford Duralie Coal Mine is a proud and active member of the Local community. Yancoal's 2023 Community Support Program offers community groups the opportunity to apply for funding to support projects, events and initiatives that help make a genuine positive difference to Gloucester, Stroud and District.

If you have a project or idea with the potential to benefit others across the areas of health, community, environment, arts, culture, education or training, please visit: www.stratfordcoal.com.au or www.duraliecoal.com.au

Applications close
on 4th November 2022



STRATFORDCOAL

Part of the Yancoal Australia Group