



MARCH 2024

STRATFORD & DURALIE UPDATE

WHAT'S HAPPENING AT STRATFORD?

Stratford is still on track to cease mining by **mid 2024**. Closure planning continues, and work has already begun to ensure final rehabilitation is completed to achieve Government sign off.

Once mining stops, employees will remain working at the site for **around four years**, closing operations, removing infrastructure and undertaking rehabilitation. This will be followed by **10-15 years** of ongoing monitoring and maintenance of rehabilitated areas.

We will continue to provide information to employees, suppliers and the local community regarding the site's closure and future uses of the site, once available.

WHAT'S HAPPENING AT DURALIE?

Mining operations at Duralie finished in **2021** and the site has transitioned to closure.

Early closure works, such as infrastructure decommissioning, have commenced while detailed mine closure planning is underway.

Rehabilitation activities will ramp up once this planning is complete.



COMMUNITY SUPPORT PROGRAM

Yancoal proudly funds local projects and initiatives that have the potential to make a positive difference within the community. For 2024, we are pleased to announce that we are supporting **26 local community organisations**, bringing the total contributions since 2010 to over **\$1,000,000**.

The Community Support Program (CSP) is a voluntary initiative and Yancoal has decided to continue this program until bulk works and rehabilitation are completed at Stratford and Duralie. As such the CSP is expected to run until approximately 2028.

For more information on the Community Support Program please visit:

<https://www.stratfordcoal.com.au>



2024 Community Support Program Recipients

ABOUT THE STRATFORD RENEWABLE ENERGY HUB (SREH)

The proposed **SREH** represents an opportunity for Yancoal to transition the Stratford site from an operating mine into a **renewable energy project**. If the project is to go ahead, it could generate more renewable energy for NSW via a pumped hydro scheme and a solar farm.

The SREH could create **up to 350 full time jobs** over the four-year construction period, and if operational, will employ approximately 10 full time employees, which will increase to around 30 people during periodic maintenance activities.

More information will be shared on the proposed SREH at the Community Information Sessions.

CURRENT STATUS

Yancoal continues to progress preparation of a Feasibility Study for SREH. In parallel, Yancoal is currently preparing an Environmental Impact Statement (EIS) to support an application for State and Federal approval.

Yancoal is proud to be investing into local and regional Australia, helping build stronger communities across the country.

INDICATIVE TIMEFRAMES

	2022	2023	2024	2025	2026	2027	2028	2029
STRATFORD MINING COMPLEX								
Coal Mining	█							
Mine Closure Planning	█							
Closure Execution and Rehabilitation			█					
Monitoring and Maintenance							█	
SREH								
Pre-Feasibility Study	✓							
Feasibility Study		█		?				
Major Environmental Approvals			█	?				
Subordinate Approvals				█				
Final Investment Decision					?			
Construction					█			
Operation								█

SREH COMMUNITY INFORMATION SESSION

Yancoal will be holding two Community Information Sessions in March. The first session will be held at **Stratford Hall** on **Monday 25th March from 3pm – 6pm**, with the second session taking place at **Gloucester Council Chambers** on **Tuesday 26th March from 3pm – 6pm**.

We encourage community members, local businesses and relevant stakeholders to attend as we will be sharing project updates on the SREH. Key team members from Yancoal will be available in each session to speak to and **answer any of your questions**.



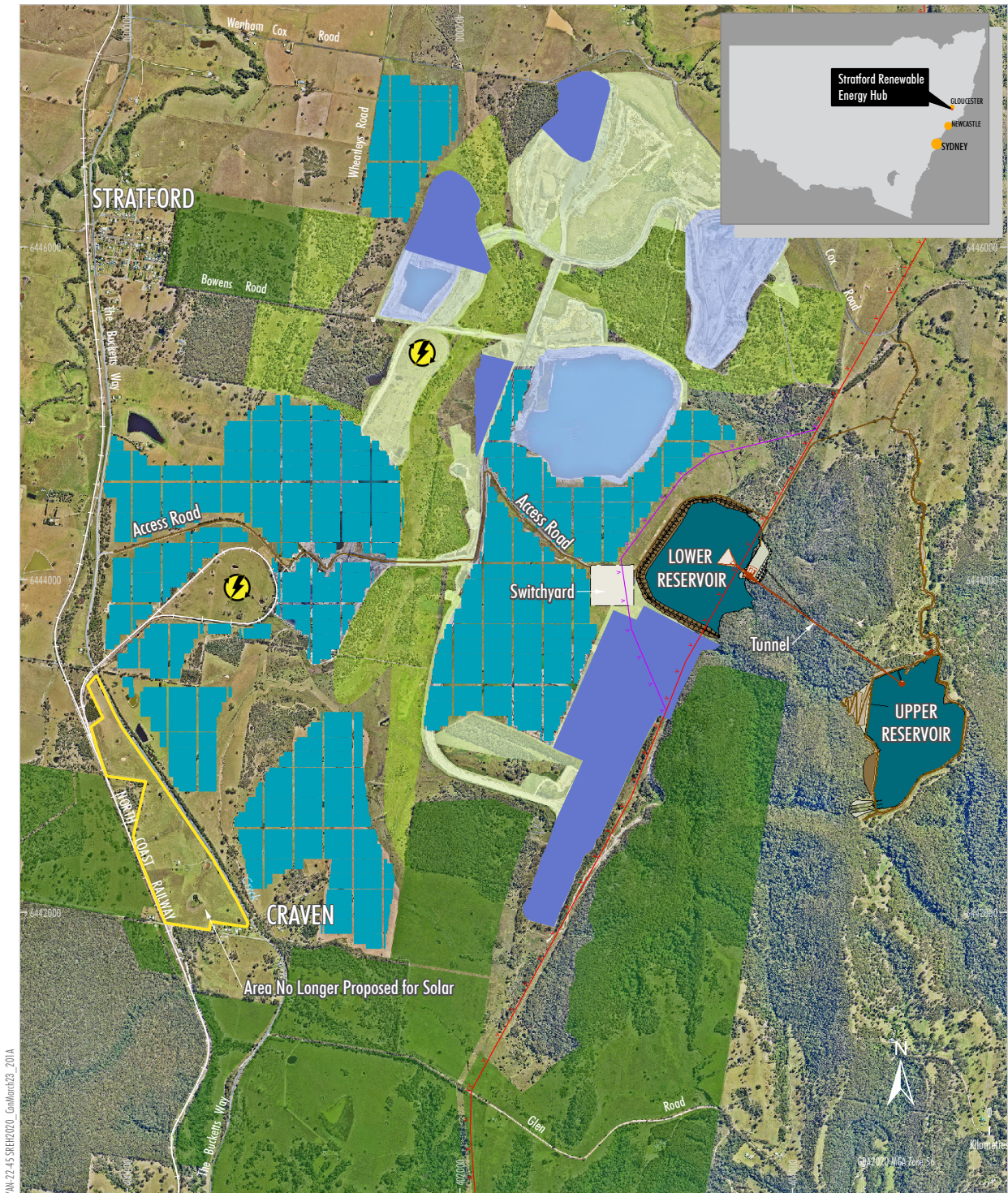
Scan QR code to take our online survey

MORE INFORMATION

We continue to work with the Government to confirm the appropriate State and Federal approval pathway for the Project. In February 2024, the Department of Planning Housing and Infrastructure (DPHI) issued Secretary's Environmental Assessment Requirements (SEARs) for the SREH EIS and we anticipate that these SEARs will be updated shortly to include Commonwealth matters under the *Environment Protection and Biodiversity Conservation Act 1999*.

SREH CONCEPT PLAN

We are continuing to investigate and refine the location of the proposed solar development in response to environmental impact assessments, community consultation and to maximise rehabilitated mine land. The location of solar west of the Bucketts Way is no longer being investigated in favour of optimising alternate land areas within our mining leases. These areas will continue to be refined through the assessment and approval process.



YAN-22-45 SREH2020_ConceptPlan23_201A

- LEGEND**
- Existing 132 kV Electricity Transmission Line
 - Native Ecosystem
 - Post Mining Waterbody
 - Proposed Native Ecosystem Rehabilitation
 - Existing Offset Area
 - Biodiversity Enhancement Area
 - Potential Areas for Future Renewables

- Proposed Components**
- Proposed Alternative 132 kV Electricity Transmission Line Re-alignment
 - Proposed Solar Photovoltaic Array Layout
 - Area No Longer Proposed for Solar
 - Additional Potential Solar Investigation Area on Rehabilitated Mine Land

Source: NSW Spatial Services (2023); Yancoal (2023)


YANCOAL - STRATFORD RENEWABLE ENERGY HUB
 Concept Plan