



Stratford Coal CCC Meeting

Presentation -
Company Report & Overview of
Activities

May 2015

Michael Plain
Environment & Community Coordinator

Table of Contents

1. Agenda Item 7a (Progress at Mine)
2. Agenda Item 7b (Environmental Projects/Activities)
3. Agenda Item 7c (Environmental monitoring performance)
4. Agenda Item 7d (Community complaints)
5. Agenda Item 7e – (Other matters)

1. Progress at the Mine

Mining 1st Quarter 2015

- Waste BCM 0 BCM
- Coal tonnes 0 tonnes
- Total BCM 0 BCM

2. Environmental Projects/Activities

Management Area	Project	Status
Reporting	<ul style="list-style-type: none"> EPL11745 	<ul style="list-style-type: none"> EPL 11745 Annual Return submitted in January 2015.
Air Quality	<ul style="list-style-type: none"> Pollution Reduction Programs Real-Time Dust Management 	<ul style="list-style-type: none"> No change One alarm received during the quarter, no operations were occurring at the time. Generally hazy conditions were present due to a southerly change.
Flora	<ul style="list-style-type: none"> Weeds Management Program 	<ul style="list-style-type: none"> Alan Andrews is preparing a figure showing weed management undertaken during 2014. Inspections have been undertaken with GSC weeds officer in areas of GPG to identify presence bio-control. Biological control released down Glen Road by GSC officer. Currently engaging with GLC and DPI to develop proposal for trial of GPG bio-control.
Fauna	<ul style="list-style-type: none"> 2014 Wild Dog Control Program 	<ul style="list-style-type: none"> Completed. Program will be reassessed in 2015.
Noise	<ul style="list-style-type: none"> Quarterly Noise Assessment Mobile Plant Assessment Real-Time Noise Continuous improvement Projects 	<ul style="list-style-type: none"> Monitoring completed in Mar 2015. Report available on Stratford Coal website. Next scheduled in May. Annual sound power level monitoring completed on mobile plant fleet in March 2015. System operational for period 8pm to 8am. Noise profiles continue to be monitored and generally indicate no exceedence of the performance criteria due to mining/CHPP activities. Several alarms were received during the quarter generally between the hours of 6am-8am. Investigation generally found the main noise contributions to be from birds & insects, traffic and freight trains. Occasionally dull noise from the plant and export train was audible. No changes during the last quarter.

2. Environmental Projects/Activities cont.

Management Area	Project	Status
Rehabilitation	<ul style="list-style-type: none">• Rehabilitation Monitoring	<ul style="list-style-type: none">• Annual rehabilitation monitoring was completed in February 2015. Final report is yet to be completed.
Lighting	<ul style="list-style-type: none">• CHPP Lighting	<ul style="list-style-type: none">• The continual improvement of the control of lighting, to enable us to easily turn off lights when not required. No other changes during the quarter.
Bushfire Management	<ul style="list-style-type: none">• Bushfire Management	<ul style="list-style-type: none">• RFS visited site with Alan Andrews to discuss a bushfire reduction burning plan in late 2014• Planning is continuing for hazard reduction burning around ML's and offset areas during Winter 2015.

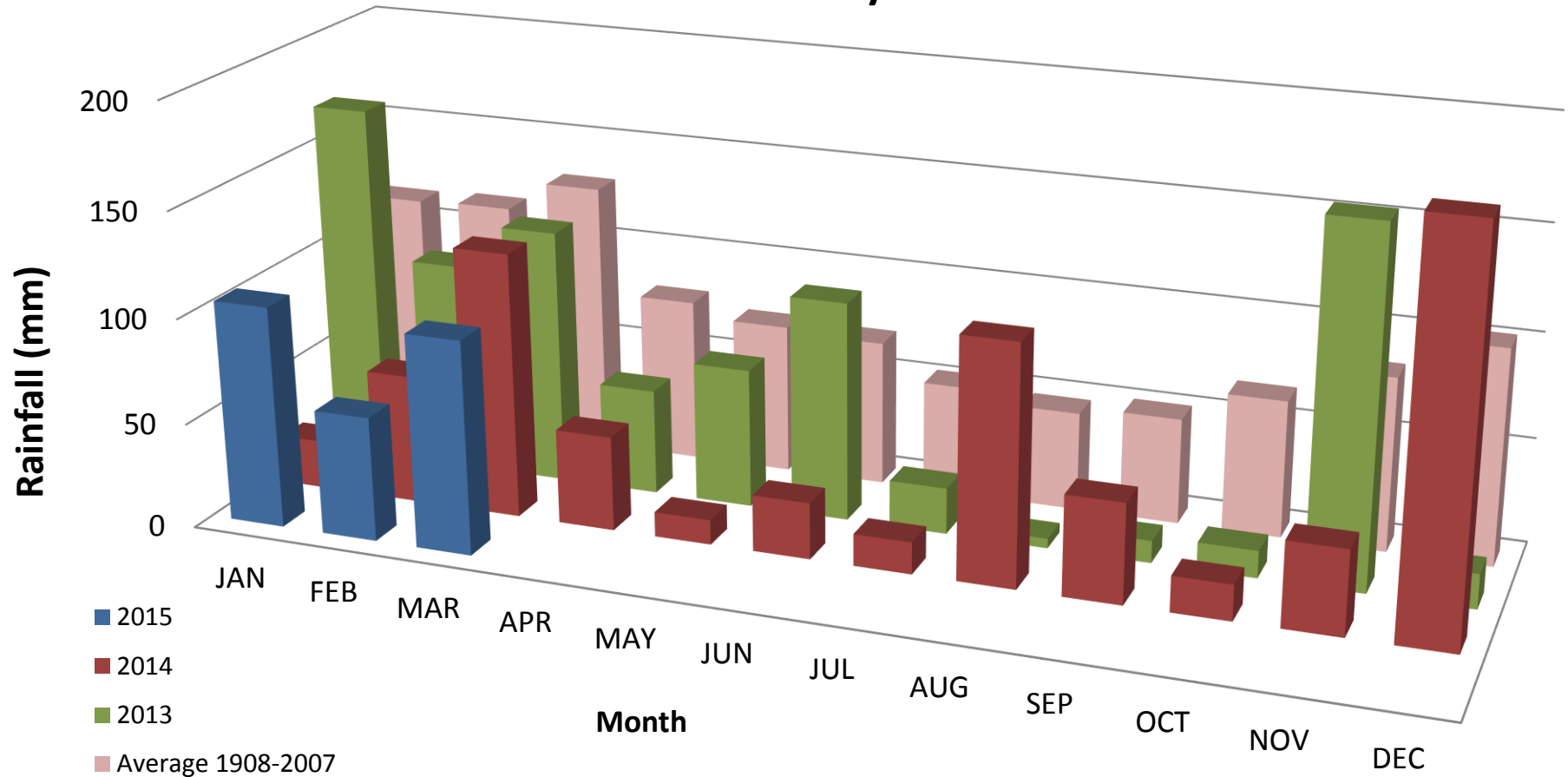
3. Environmental Monitoring Performance

1. Rainfall
2. Surface Water
 - a. Total Suspended Solids
 - b. pH
 - c. Electrical Conductivity
3. Main Pit Water Quality
4. Reject Monitoring
5. Air Quality
 - a. Dust Deposition
 - b. Dust Deposition – Petrographic Analysis
 - c. High Volume Air Sampler
 - d. High Volume Air Sampler-Rolling Average
 - e. Real Time Dust Monitoring (TEOM) – PM2.5/PM 10



Rainfall

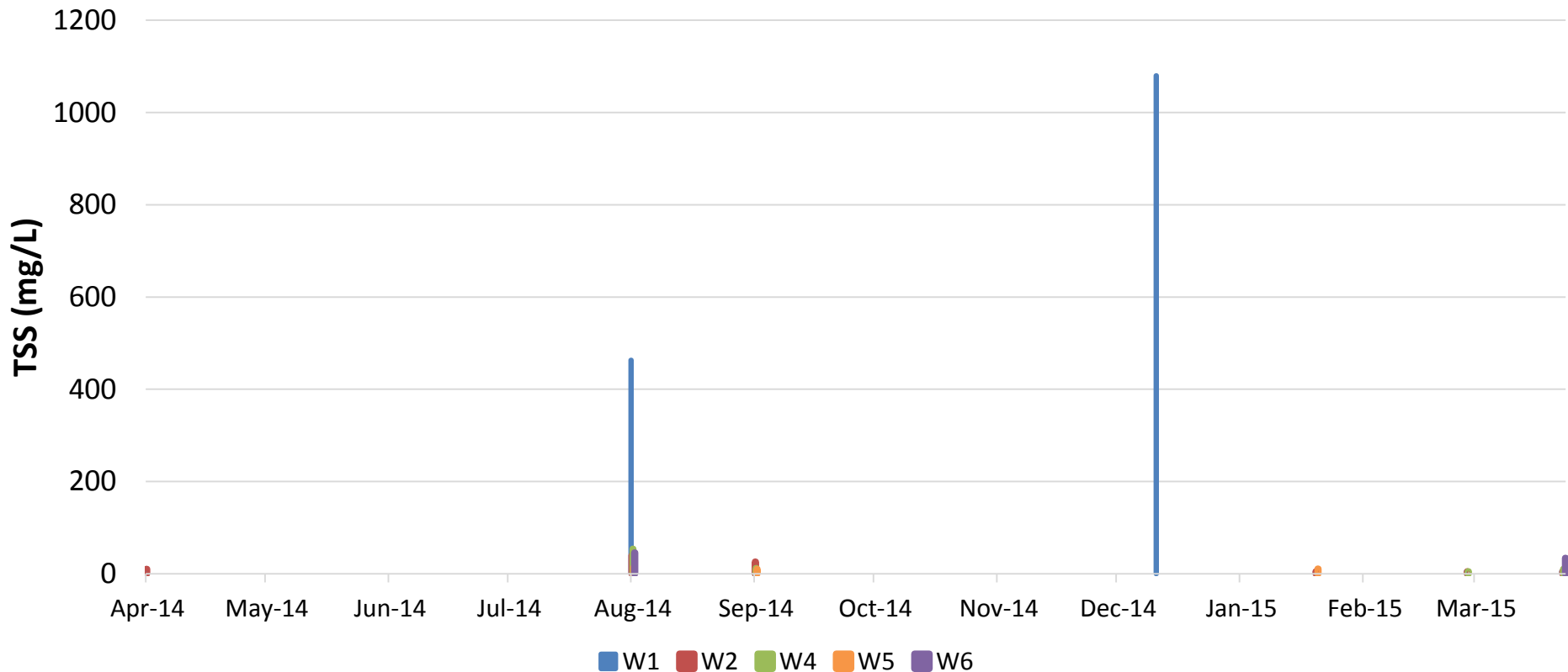
Stratford Monthly Rainfall



- 2014 Annual Total: 716.2 mm
- Near average Q1 2015

Surface Water – Total Suspended Solids

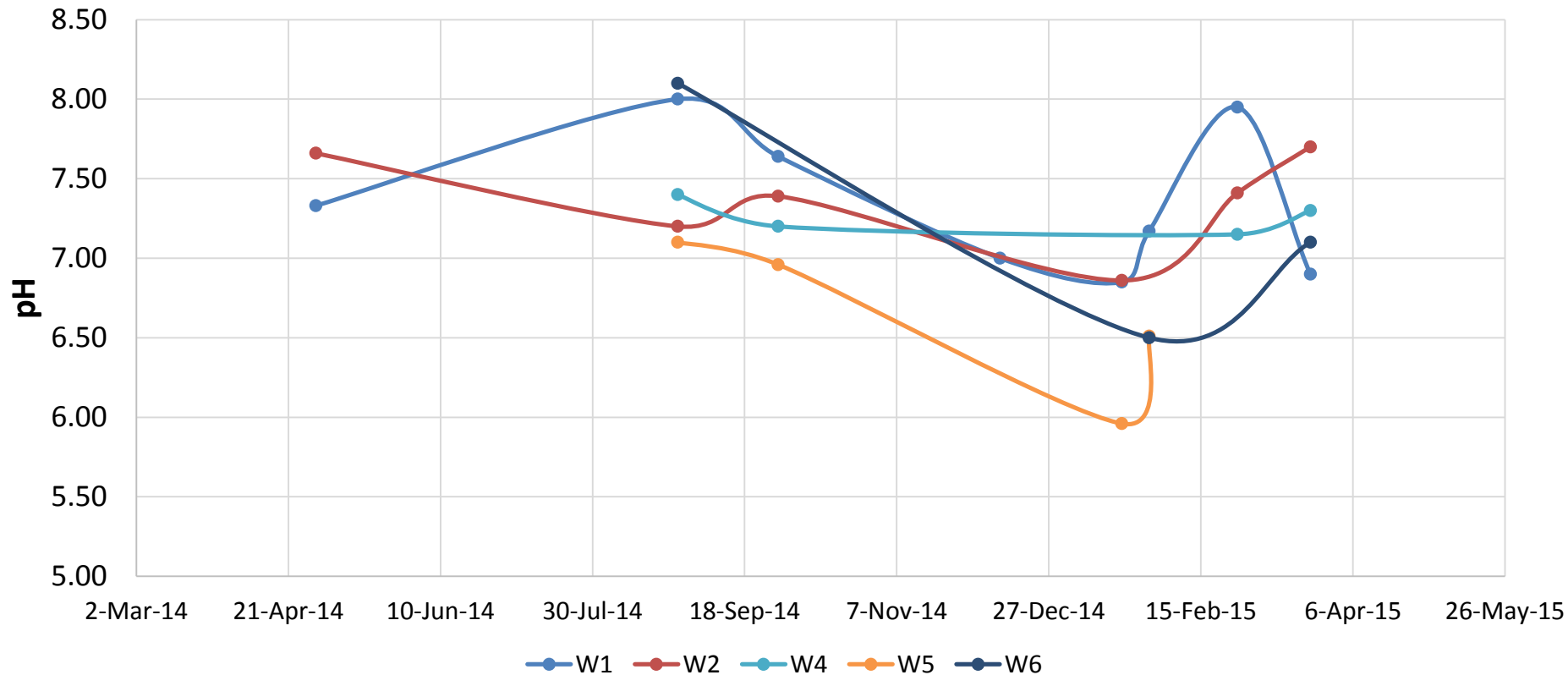
TSS - Avon River/Avondale Creek
12 Months to Apr 2015



- All sites returned generally low TSS. High reading at W1 (upstream of operations) on 27-Aug-14 and 11-Dec-14 following heavy rain
- Gaps indicate no flow

Surface Water - pH

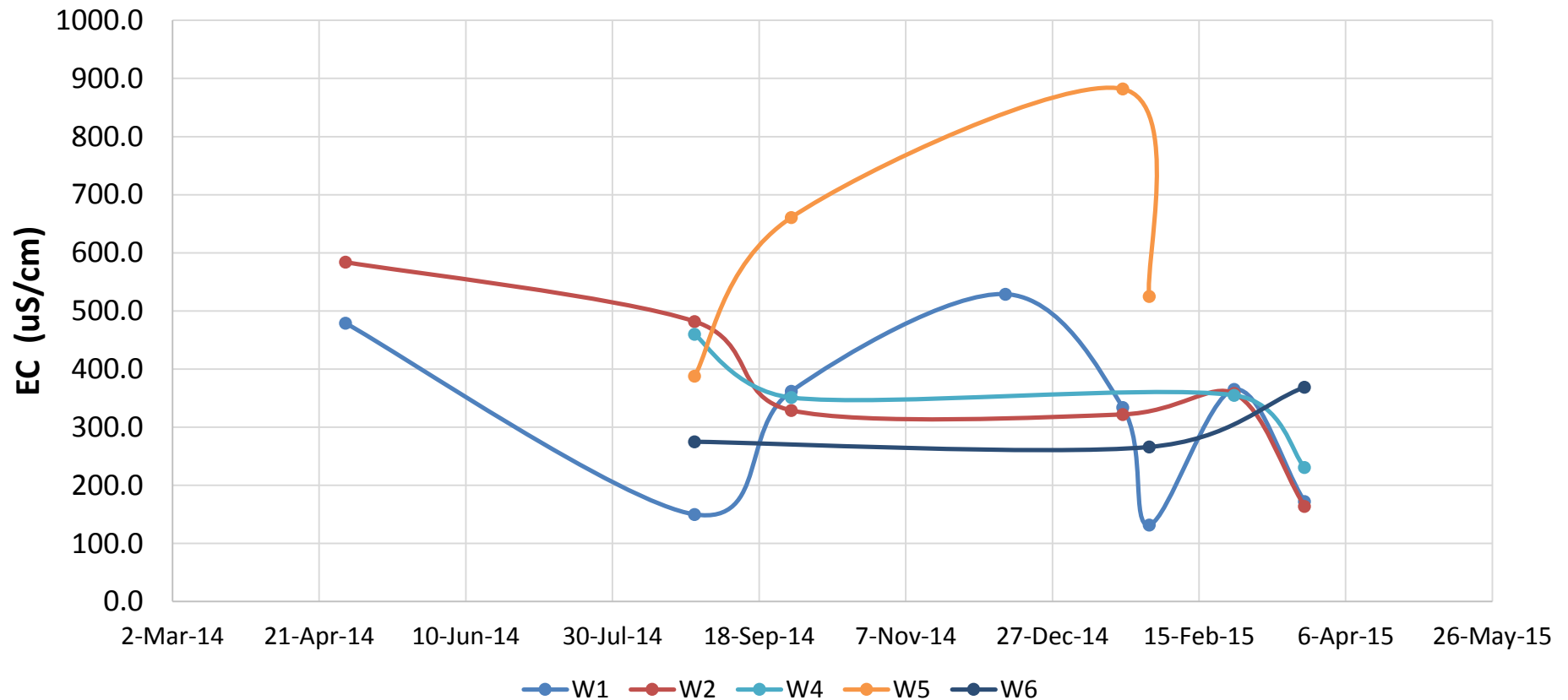
pH - Avon River & Avondale Creek 12 Months to Apr 2015



- All sites generally within ANZECC Guideline range (pH 6.5 - 8.0).
- Gaps indicate no flow

Surface Water – Electrical Conductivity

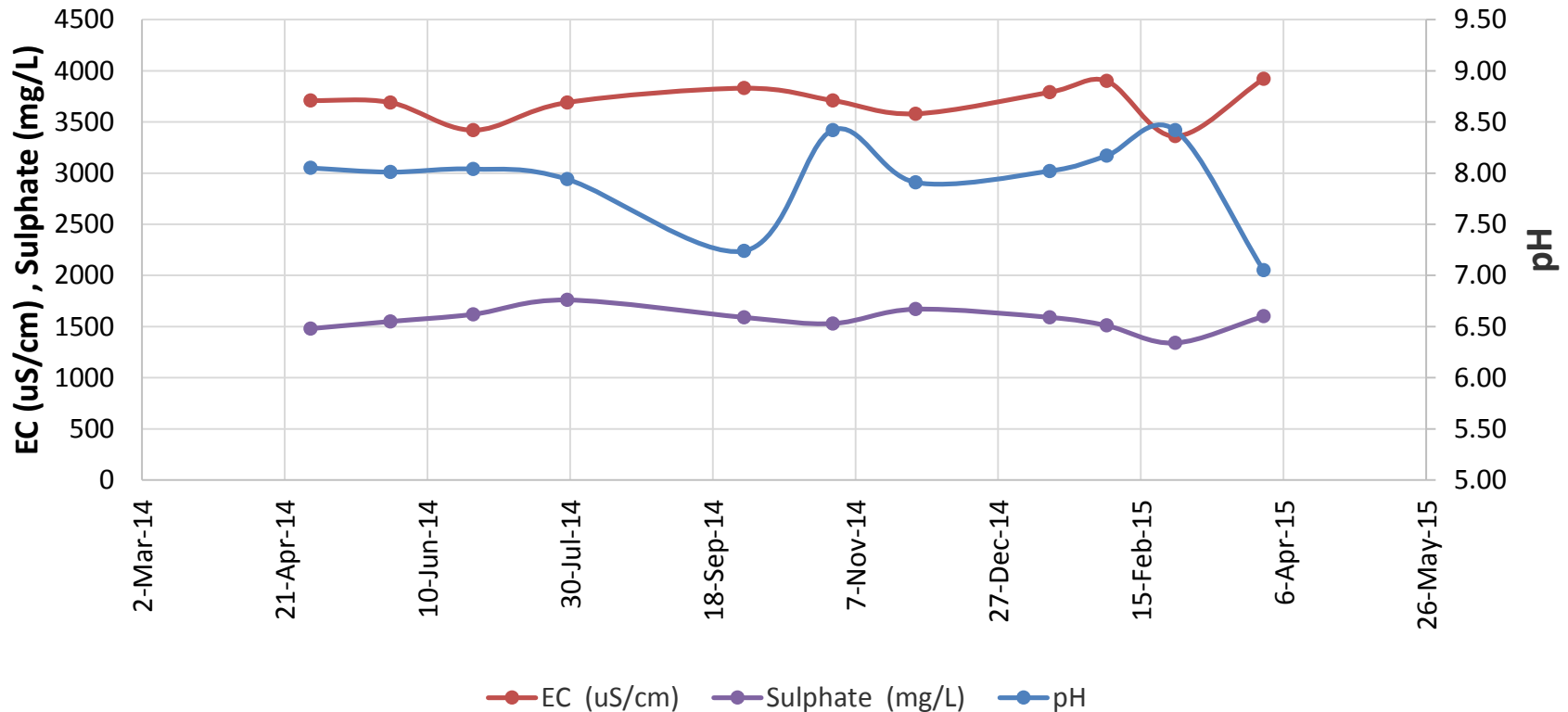
EC - Avon River & Avondale Creek 12 Months to Apr 2015



• Gaps indicate no flow

Main Pit – Water Quality

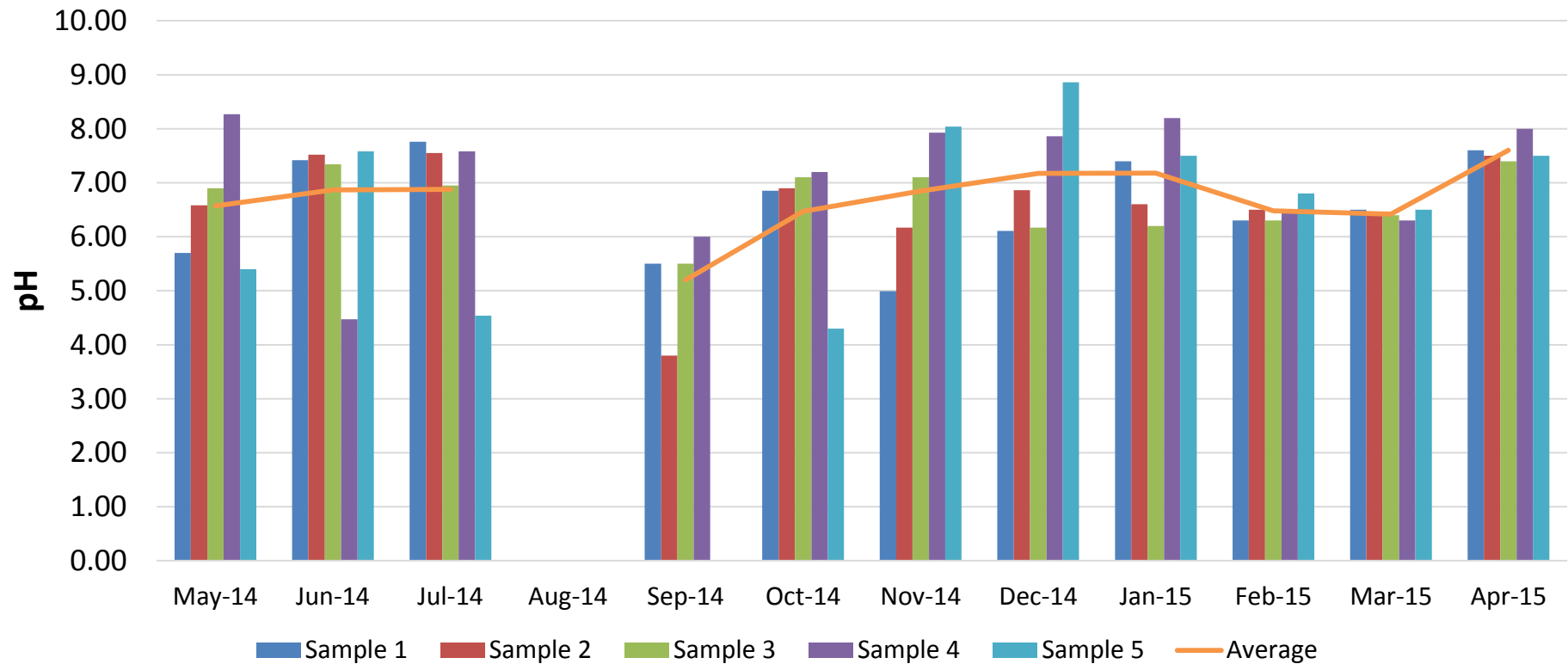
Stratford Main Pit Water Quality 12 months to Mar 2015



• All results within expected range.

Reject Sampling

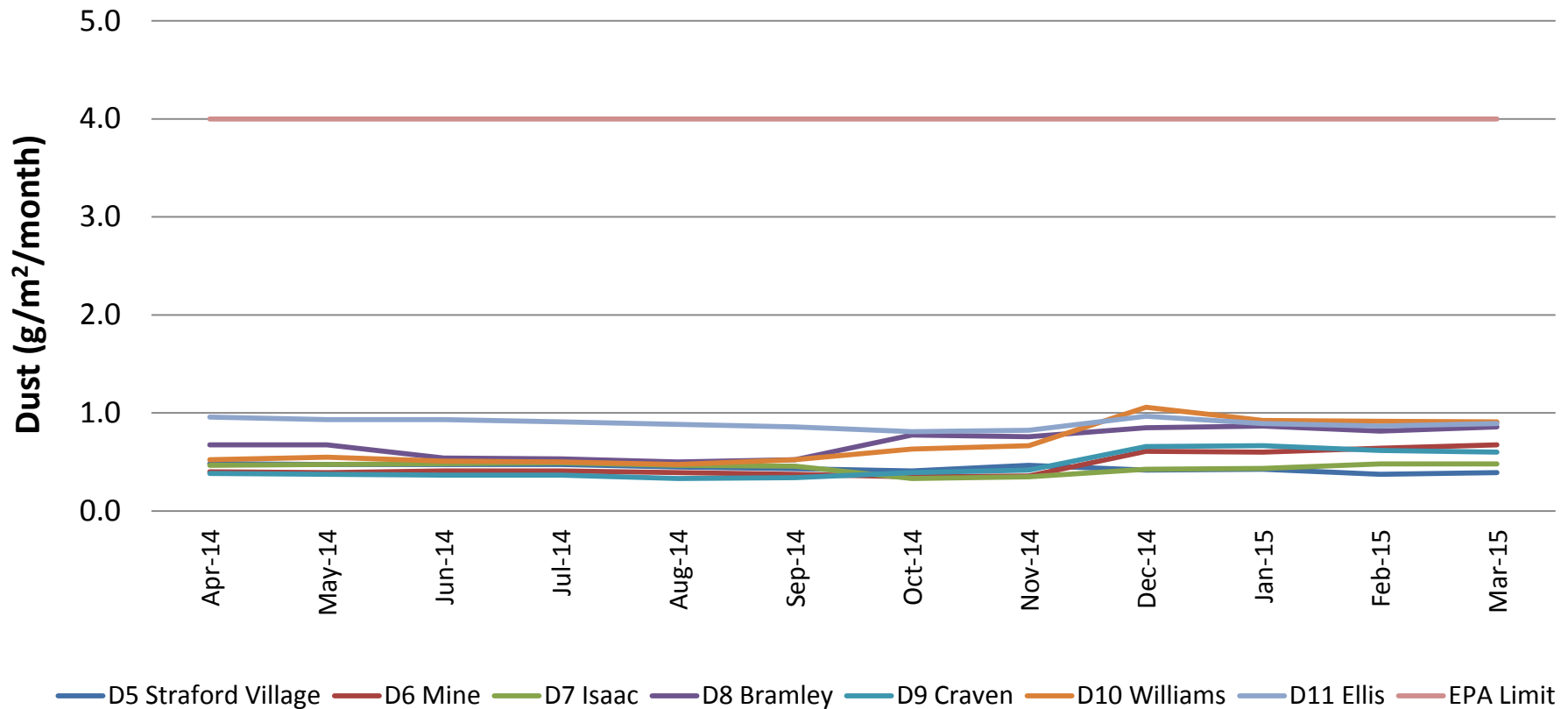
Stratford Main Pit Reject Monitoring 12 months to Apr 2015



- pH within expected range
- No access Aug-14
- Reject Beach limed routinely

Air Quality – Dust Deposition

Stratford Dust Deposition - Annual Rolling Average 12 Months to Apr 2015



- All sites are well below EPA limit of 4g/m²/month
- Samples with significant contamination excluded

Air Quality – Petrographic Analysis

Visual Description Guide

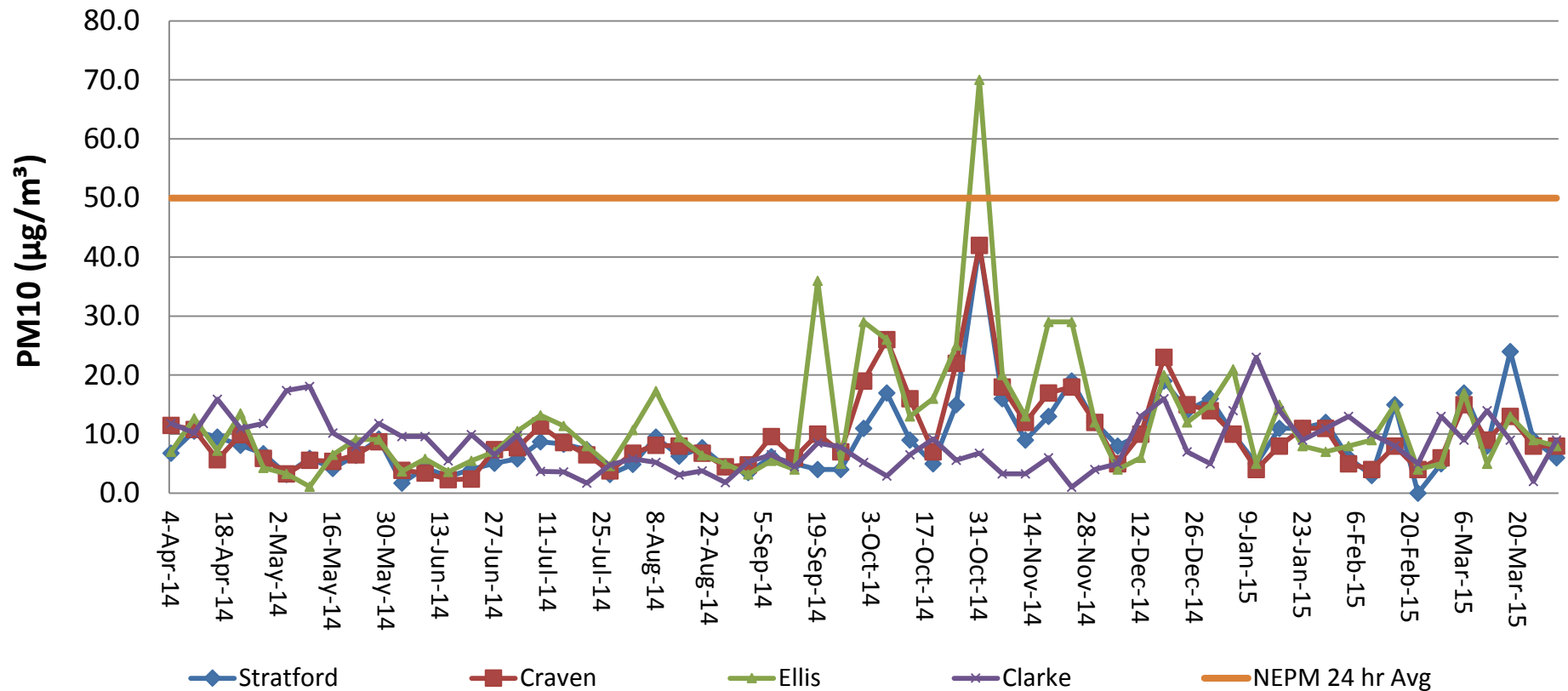
*Insoluble Matter is viewed under a microscope, major constituents are estimated, examples of each category are as follows:

- Dirt/minerals:** Subhedral to euhedral crystalline grains including fine sand, clay and other fine mineral particulates.
- Coal:** Black sharp angled grains with glossy conchoidal fractures or dull with cellular feature.
- Insects:** Whole insects eg spiders, ants, moths or outer parts of insects including wings, legs and exoskeletons.
- Polysaccharide Slime:** Slimy gelatinous material including decomposed soft body parts of insects and vegetation.
- Vegetation:** Plant debris and algae including trichomes, decomposed organic matter and charred particulates showing characteristic cellular plant structures.

Petrographic Analysis				
Month	Sample Number	Insoluble Matter (g/m2/month)	Deposition	Visual Description - Insoluble Matter
Jan-15	D5-Petro	0.3	Light	40% Minerals, 0% Coal, 40% Vegetation, 20% Insects, 0% Polysaccharide slime
	D6-Petro	1.0	Light	30% Minerals, 10% Coal, 20% Vegetation, 40% Insects, 0% Polysaccharide slime
Feb-15	D5-Petro	0.3	Light	40% Minerals, 40% Coal, 20% Vegetation, 0% Insects, 0% Polysaccharide slime
	D6-Petro	0.2	Light	30% Minerals, 20% Coal, 30% Vegetation, 20% Insects, 0% Polysaccharide slime
Mar-15	D5-Petro	0.7	Light	30% Minerals, 10% Coal, 20% Vegetation, 40% Insects, 0% Polysaccharide slime
	D6-Petro	0.5	Light	50% Minerals, 0% Coal, 20% Vegetation, 30% Insects, 0% Polysaccharide slime

Air Quality – High Volume Air Sampler

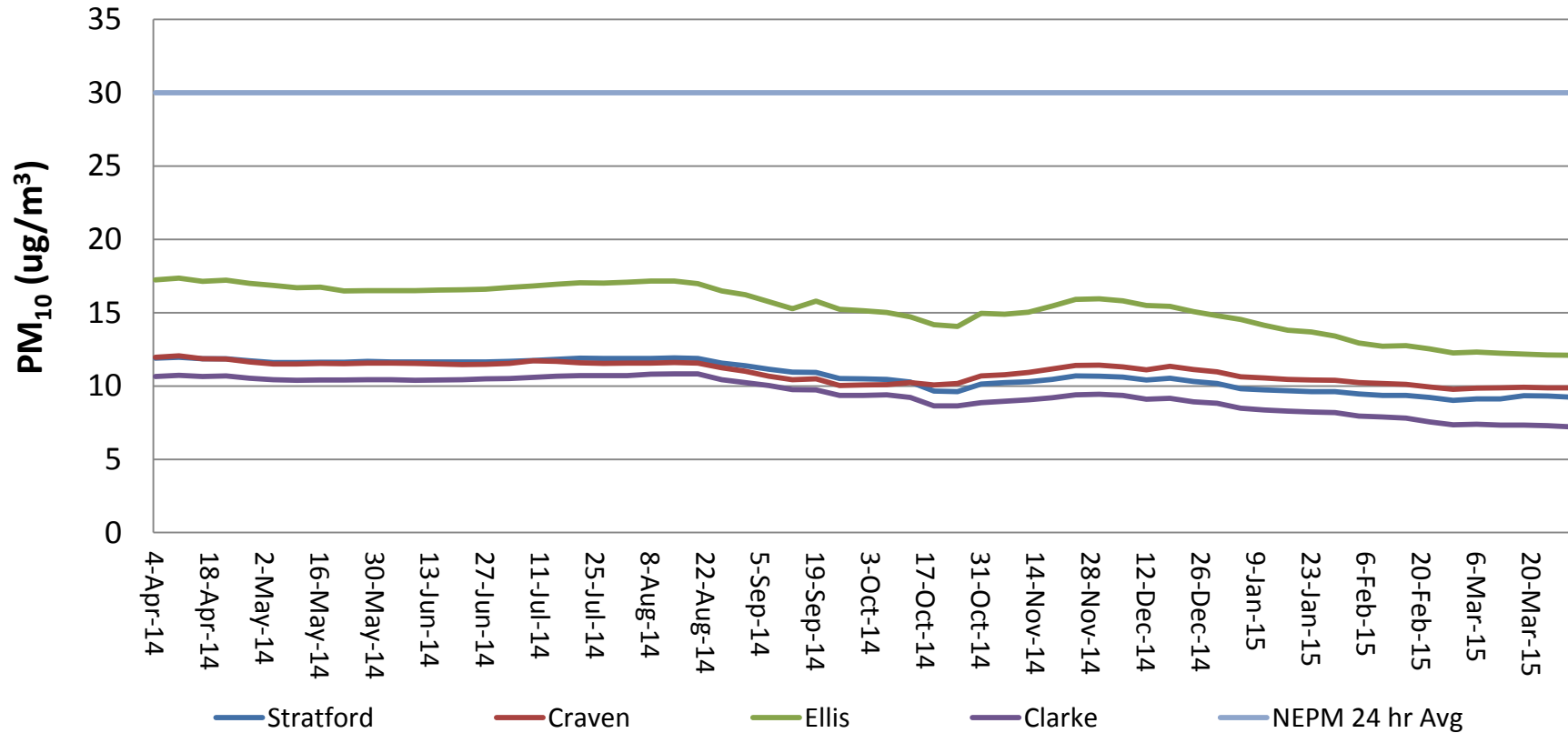
Stratford HVAS Monitoring - Particulate Matter (PM₁₀) 12 Months to Apr 2015



- All sites generally well below NEPM 24hr average level.
- Spike in October is due to fires to the west and south of the mine site. Not considered a breach of licence criteria as the Development consents exclude extraordinary events such as bushfires.

Air Quality – HVAS Rolling Average

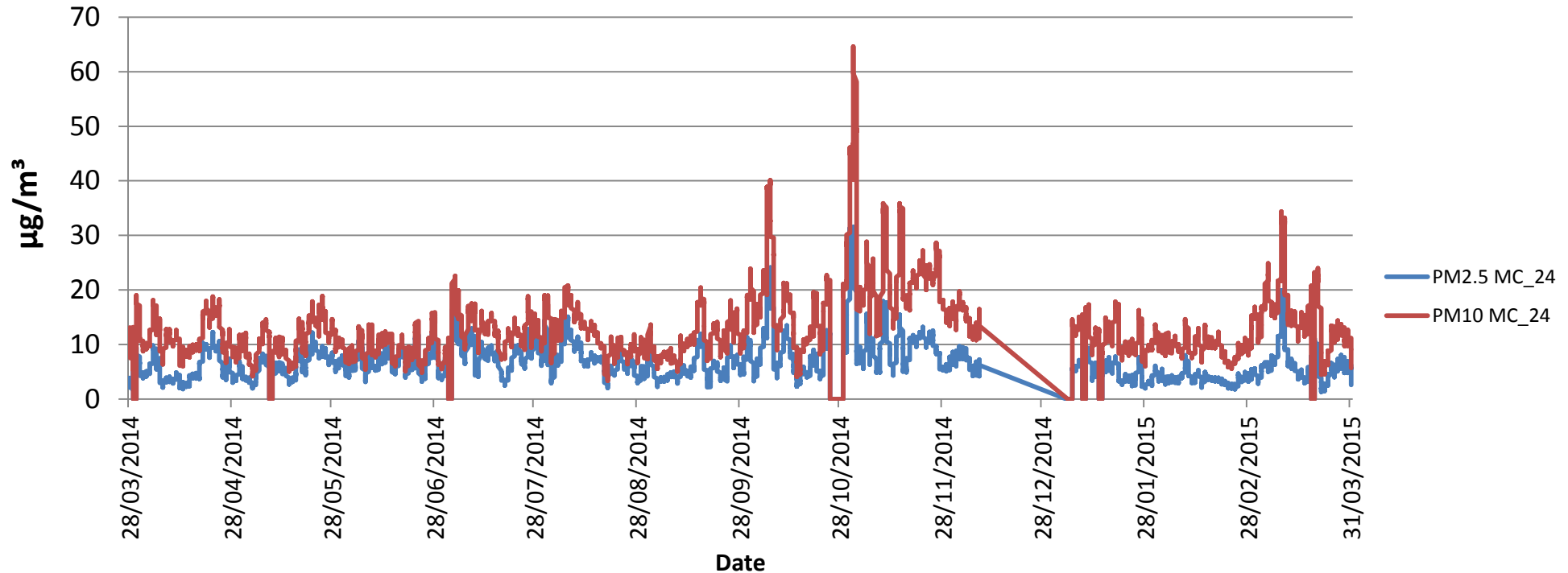
Stratford HVAS Monitoring (PM₁₀) Annual Rolling Average - 12 Months to Apr 2015



• All site averages well below EPA Limit

Air Quality – TEOM (Real Time) Monitoring

TEOM (Real Time) Dust Monitoring - Hourly averaged PM2.5/PM10 Apr 2014 - Mar 2015



- Several alarms received from the Real-time dust unit (TEOM) in November resulting from local bushfires and hazy conditions in the valley, particularly 1-5 November 2015. No operations and wind direction not consistent with contribution from the mine.
- Zero/negative values are due to moisture vapour/dew drying on filter creating small negative mass readings.
- A power outage occurred during December 2015.

4. Community Complaints - Summary

Stratford Complaint Summary

Period: 1/1/15 - 31/3/15

Period: 3 Months

Total No. of Complaints: 2 (noise)

Total No. of Complainants: 1

Time/Date of Complaint	Complainant Location	Method of Complaint	Nature of Complaint	Outcome
22:40hrs 3/02/15	Approx 3km W of CHPP	Community hotline	Noise	Complainant received regarding noise levels from the CHPP. Stratford representative called 4 February at approximately 5:30pm and left message. Called twice again on 5 February and once more 6 February to resolve complainant concerns and left contact details and messages.
21:29hrs 8/03/15	Upper Avon Rd, Stratford	Community hotline	Noise	Complaint received regarding 'noise from mine. DCPL contacted complainant to discuss noise concerns. Confirmed there was an export train being loaded between 1909 to 2249 and 1 dozer was on the southern stockpile to tidy up for a little while after the train finished. Advised that the plant was not running during the night.

5. Environmental Approvals - SEP

- DP&E advised that the Stratford Extension Project is with the PAC for final determination.
- The DP&E Final Assessment Report and Recommended (Draft) Conditions of Approval are available on the Planning Assessment Commission and Department of Planning & Environment websites.
- The PAC is accepting written comments on the Department's assessment and recommendations, prior to determining the proposal.
- The PAC is accepting comments submitted up until 5:00pm, Monday 4 May 2015 via email, post and fax.